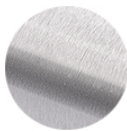
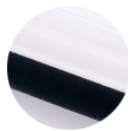




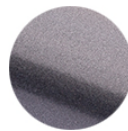
AVAILABLE FINISHES



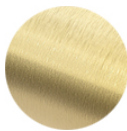
BRUSHED
STAINLESS



POLISHED
STAINLESS



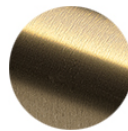
GUNMETAL
GREY



BRUSHED
BRASS



POLISHED
BRASS



ANTIQUÉ
BRASS



SUNSET
COPPER

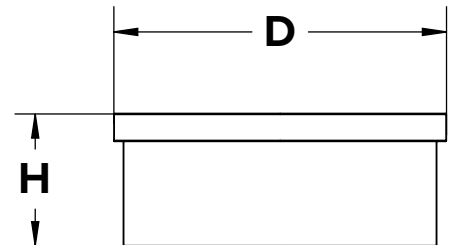


OIL RUBBED
BRONZE



MATTE
BLACK

CUSTOM COLORS ARE AVAILABLE BY REQUEST



DIMENSIONS

(H) HEIGHT	0.80"
(D) DIAMETER	2.00"

INSTALLATION

1. Secure bar rail tubing to bar face.
2. Insert end cap into the end of bar rail tubing.
3. End cap will fit loosely into the tubing. Use adhesive for more a secure, permanent fit.

Care and maintenance of bar foot rail varies by finish. Given the nature of the product, typical wear and tear may be noticed with your bar rail over time, such as scuffs, scratches, and dirt. Visit [kegworks.com/bar-rail-care](https://www.kegworks.com/bar-rail-care) to read our guide on how to properly prep, clean & maintain all bar rail finishes.